



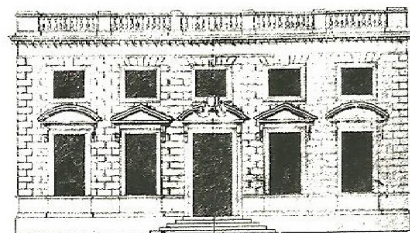
LAMPORT HALL

1740



HOUSE OF THE ISHAM FAMILY FOR FIVE CENTURIES
HELD BY THE LAMPORT HALL PRESERVATION TRUST IN PERPETUITY

In 1651, when Sir Justinian Isham became the second Baronet, he found the existing Manor House not large enough and so he commissioned John Webb, the principal assistant to Inigo Jones, to design an extension which now forms the central part of this south-west front of the Hall, while the pediment and wings to each side were added by the fifth Baronet, Sir Justinian Isham, to the design of William Webb, the son of John Webb, with the Hall being completed by Francis Smith of Warwick, in around 1740.



THE JOHN WEBB DESIGN
1652